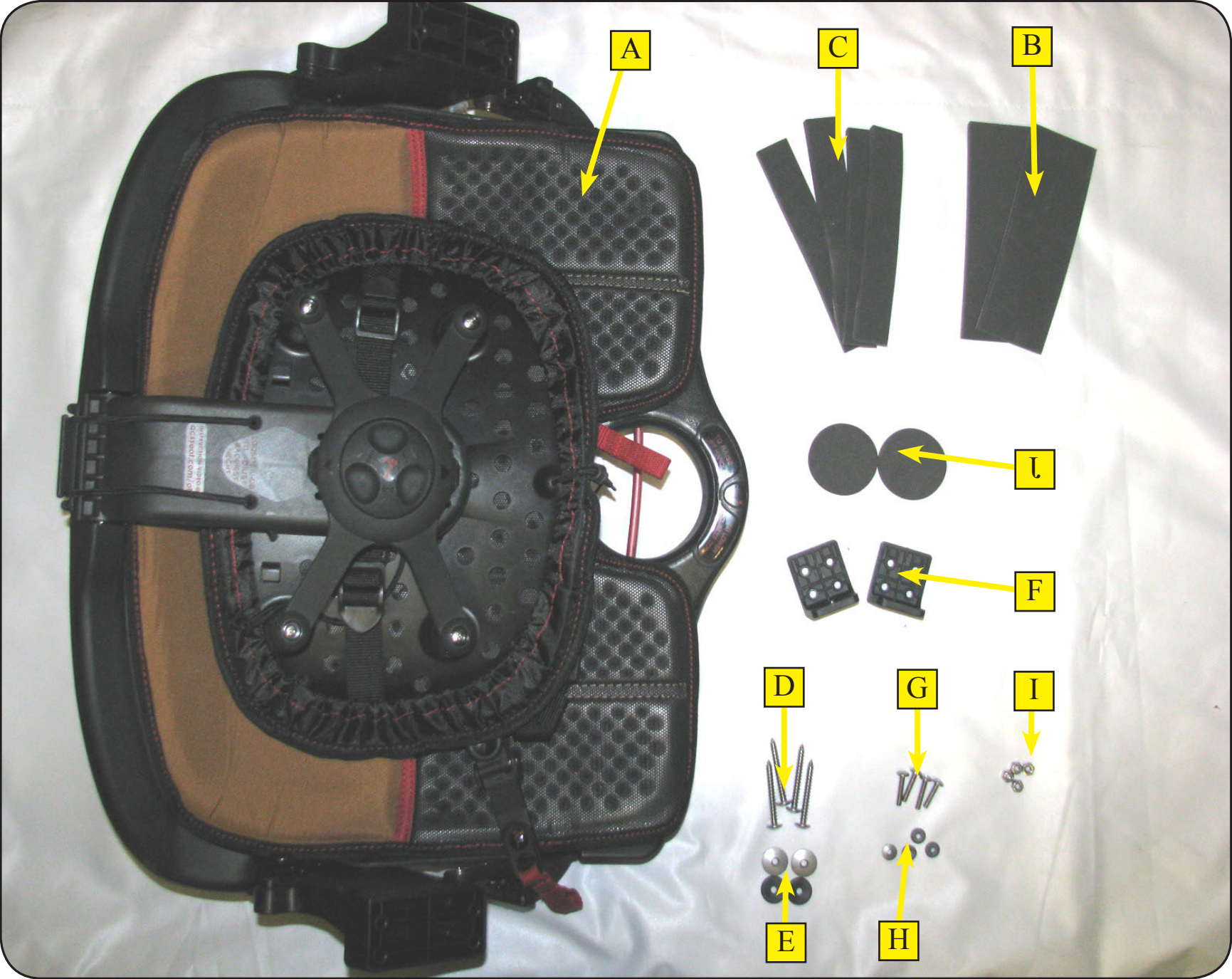


Old Town Canoe produces many varied shapes, models, and sizes of seats and kayaks. This instruction is a guide to install the ACSII Seat in your Kayak. Please call our Customer Service Team for questions about your specific model.



Ref.	Part	Part #	Qty.
A	ACSII Seat Assembly	01.1331.0378	1
B	Seat Base Foam Center .25	07.2000.0833	2
C	Seat Base Foam Outside .25	07.2000.0834	4
D	2" X 14 Truss Screw	01.1315.1624	4
E	1/4 Bonded 7/8 Washer	01.1315.0063	4
F	Angled Seat Bracket	01.1315.0695	2
G	10-32 X 1" Truss Bolt	01.1315.0704	4
H	10-32 Neobond Washer	01.1315.0016	4
I	10-32 Nylon Locknut	07.2116.0000	4
J	Bumper Pads	07.2000.0835	2

K-01.1332.0055 ACSII Seat Kit 2017



1. Remove old seat with a phillips head screwdriver. You may need to rotate the seat 90 degrees in order to remove it from the cockpit.



2. Remove the Seat Bracket with a phillips head driver and 3/8ths wrench.



3. Insert the ACSII Seat Assembly (A) into the cockpit and check tower to floor fit. The towers should be tight and the seat base tight to the floor of the kayak. If seat is tight from towers to floor, tighten tower bolts and proceed to step six.

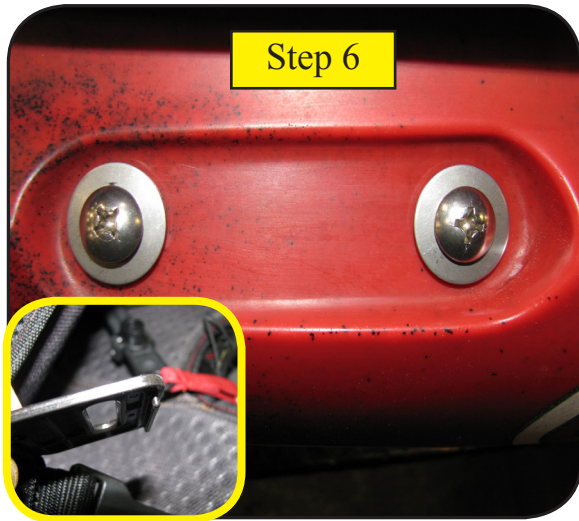


4. If towers are short remove the three bolts and adjust the height to best fit. Reinstall bolts, washers, and tighten.

Ref.	Part	Part #	Qty.
A	ACSII Seat Assembly	01.1331.0378	1
B	Seat Foam Base Center .25	07.2000.0833	2
C	Seat Foam Base Outside .25	07.2000.0834	4
D	2" X 14 Truss Screw	01.1315.1624	4
E	1/4 Bonded 7/8 Washer	01.1315.0063	4
F	Angled Seat Bracket	01.1315.0695	2
G	10-32 X 1" Truss Bolt	01.1315.0704	4
H	10-32 Neobond Washer	01.1315.0016	4
I	10-32 Nylon Locknut	07.2116.0000	4
J	Bumper Pads	07.2000.0835	2



5. Add Seat Base Foam Center .25 (B) and Seat Base Foam Outside (C) as needed to allow the seat base to sit tight to the floor.



6. Each seat back strap has a plastic plate with tabs (See Fig). These plates must be slid between seat bracket and hull with tab facing down to hold bracket in place (See Fig). CAUTION: Straps must not be twisted. Insert 2" X 14 Truss Screws (D) through 7/8 SS Sealing Washer (E), thread through kayak, Seat bracket. Repeat to other bolt and other side.



7 Secure Angled Seat Bracket (F) to hull by threading a 10-32 X 1 Truss Bolt (G) through a 10-32 Neo Bond Washer (H), secure with a 10-32 Nylon Locknut (I) Repeat to other bolt and other side.



8. With the ratchet knob in the furthest position place lock knob vertically into bracket and then turn down to lock in place as shown in fig.



9. Lower seat pan to lowest position and lightly press down to leave marks on inside hull. Flame marks and center a Bumper Pad (J) on each mark left on hull. lower seat base. Adjust seat back straps and enjoy your new seat!